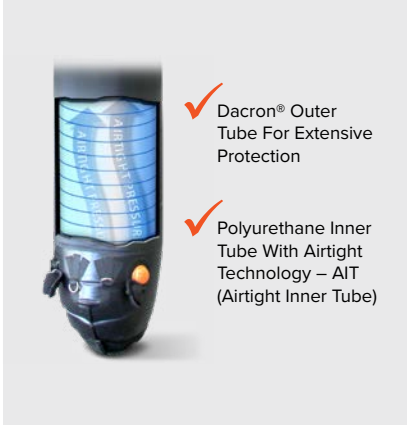


▶ AIRDOME

# AirDOME™



- ✓ Dacron® Outer Tube For Extensive Protection
- ✓ Polyurethane Inner Tube With Airtight Technology – AIT (Airtight Inner Tube)

**B. OVER PRESSURE VALVES**

The valve system will automatically release excess air when the optimum pressure is reached.



**C. STAINLESS STEEL BALLAST CONNECTIONS**

Reinforced anchoring system for securing your inflatable event dome tent on different terrains.



**D. HEAVY DUTY WALL ZIPPERS**

Allows walls and windows to be easily added.



**A. FAST AIRFLOW ONE-WAY VALVE**

Fast inflating valve system guarantees that no air will escape when you unplug your air pump. No continuous air supply needed.

**E. HAND PUMP, PRO STAKES & TRANSPORT BAG INCLUDED**



**PRODUCT SPECIFICATIONS**

SIZE	DIMENSIONS	WEIGHT
10' x 10'	125"W x 125"D x 94"H	33 lbs.
13' x 13'	157"W x 157"D x 106"H	40 lbs.
17' x 17'	191"W x 191"D x 129"H	55 lbs.
20' x 20'	232"W x 232"D x 158"H	120 lbs.
26' x 26'	319"W x 319"D x 209"H	165 lbs.

**SIZE OPTIONS**



**FULL DYE-SUB PRINTED TOP (600 DENIER POLYESTER) + FRAME**

ITEM #	SIZE	Qty 1	2-5	6-11	12-24
100077	10' x 10'	\$2,997	\$2,937	\$2,877	\$2,817
100075	13' x 13'	\$4,305	\$4,219	\$4,133	\$4,047
100076	17' x 17'	\$5,405	\$5,297	\$5,189	\$5,081
100112	20' x 20'	\$12,794	\$12,538	\$12,282	\$12,026
100113	26' x 26'	\$14,632	\$14,339	\$14,047	\$13,754 (C)

**SET UP STEPS**

1. TRAVEL
2. UNFOLD
3. FAST SETUP ONLY 5 MINUTES INFLATE
4. ENJOY



## WALL OPTIONS



Wall

### SINGLE-SIDED FULL DYE-SUB PRINT

ITEM #	SIZE	Qty 1	2-5	6-11	12-24	
100057	10'	\$432	\$423	\$415	\$406	
100062	13'	\$515	\$505	\$494	\$484	
100067	17'	\$707	\$693	\$679	\$665	
100108	20'	\$868	\$851	\$833	\$816	
100109	26'	\$1,126	\$1,103	\$1,081	\$1,058	(C)

### DOUBLE-SIDED FULL DYE-SUB PRINT

ITEM #	SIZE	Qty 1	2-5	6-11	12-24
100056	10'	\$1,017	\$997	\$976	\$956
100061	13'	\$1,232	\$1,207	\$1,183	\$1,158
100066	17'	\$1,658	\$1,625	\$1,592	\$1,559
100116	20'	\$1,737	\$1,702	\$1,668	\$1,633
100117	26'	\$2,251	\$2,206	\$2,161	\$2,116

### PRODUCT SPECIFICATIONS

SIZE	DIMENSIONS	WEIGHT*
10'	134"W × 91"H	4 lbs.
13'	156"W × 100"H	4 lbs.
17'	188"W × 113"H	5 lbs.
20'	211"W × 113"H	5 lbs.
26'	279"W × 157"H	6 lbs.

*\*Weights for Single-Sided & Stock Items*



Wall with Window (Clear Vinyl)

### SINGLE-SIDED FULL DYE-SUB PRINT

ITEM #	SIZE	Qty 1	2-5	6-11	12-24	
100058	10'	\$462	\$453	\$444	\$434	
100063	13'	\$545	\$534	\$523	\$512	
100068	17'	\$747	\$732	\$717	\$702	
100118	20'	\$936	\$917	\$899	\$880	
100119	26'	\$1,193	\$1,169	\$1,145	\$1,121	(C)

### PRODUCT SPECIFICATIONS

SIZE	DIMENSIONS	WEIGHT
10'	122"W × 89"H	4 lbs.
13'	153"W × 110"H	5 lbs.
17'	186"W × 135"H	6 lbs.
20'	211"W × 113"H	6 lbs.
26'	279"W × 157"H	7 lbs.



Awning Banner

### SINGLE-SIDED FULL DYE-SUB PRINT

ITEM #	SIZE	Qty 1	2-5	6-11	12-24	
100017	10'	\$105	\$103	\$101	\$99	
100023	13'	\$148	\$145	\$142	\$139	
100029	17'	\$167	\$164	\$160	\$157	(C)

### PRODUCT SPECIFICATIONS

SIZE	DIMENSIONS	WEIGHT
10'	53"W × 15"H	1 lbs.
13'	83"W × 24"H	1 lbs.
17'	103"W × 33"H	1 lbs.



Awning

### SINGLE-SIDED FULL DYE-SUB PRINT + HARDWARE

ITEM #	SIZE	Qty 1	2-5	6-11	12-24	
100080	10'	\$952	\$933	\$914	\$895	
100081	13'	\$1,167	\$1,144	\$1,120	\$1,097	
100082	17'	\$1,372	\$1,345	\$1,317	\$1,290	(C)

### PRODUCT SPECIFICATIONS

SIZE	DIMENSIONS	WEIGHT
10'	122"W × 89"H	9 lbs.
13'	153"W × 110"H	13 lbs.
17'	186"W × 135"H	18 lbs.

▶ AIRDOME

**WALL OPTIONS**

**Connector**

**SINGLE-SIDED FULL DYE-SUB PRINT**

ITEM #	SIZE	Qty 1	2-5	6-11	12-24
100032	10' x 10' to 10' x 10'	\$322	\$316	\$309	\$303
100034	10' x 10' to 13' x 13'	\$393	\$385	\$377	\$369
100036	10' x 10' to 17' x 17'	\$482	\$472	\$463	\$453
100038	13' x 13' to 13' x 13'	\$377	\$369	\$362	\$354
100040	13' x 13' to 17' x 17'	\$508	\$498	\$488	\$478
100042	17' x 17' to 17' x 17'	\$455	\$446	\$437	\$428

(C)

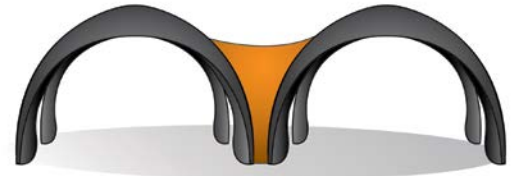
**STOCK COLOR**

ITEM #	SIZE	Qty 1	2-5	6-11	12-24
100033	10' x 10' to 10' x 10'	\$240	\$235	\$230	\$226
100035	10' x 10' to 13' x 13'	\$288	\$282	\$276	\$271
100037	10' x 10' to 17' x 17'	\$355	\$348	\$341	\$334
100039	13' x 13' to 13' x 13'	\$277	\$271	\$266	\$260
100041	13' x 13' to 17' x 17'	\$377	\$369	\$362	\$354
100043	17' x 17' to 17' x 17'	\$323	\$317	\$310	\$304

(C)

**PRODUCT SPECIFICATIONS**

SIZE	DIMENSIONS	WEIGHT
10' x 10' to 10' x 10'	51"W x 221"H	3 lbs.
10' x 10' to 13' x 13'	73"W x 245"H	6 lbs.
10' x 10' to 17' x 17'	101"W x 278"H	8 lbs.
13' x 13' to 13' x 13'	65"W x 277"H	4 lbs.
13' x 13' to 17' x 17'	85"W x 295"H	5 lbs.
17' x 17' to 17' x 17'	77"W x 310"H	6 lbs.



## ACCESSORIES

### ELECTRIC PUMP

ITEM #	Qty 1	2-5	6-11	12-24
160002	\$70	\$69	\$67	\$66

### HAND PUMP

ITEM #	Qty 1	2-5	6-11	12-24
160005	\$32	\$31	\$31	\$30

### 30 lbs RUBBER WEIGHT

ITEM #	Qty 1	2-5	6-11	12-24
230003	\$81	\$79	\$78	\$76 (C)

### PRO STAKES (SET OF 4)

ITEM #	Qty 1	2-5	6-11	12-24
230246	\$24	\$24	\$23	\$23

### EASY RATCHET

ITEM #	Qty 1	2-5	6-11	12-24
230023	\$27	\$26	\$26	\$25

### HEAVY WINDS STAKE KIT (4 ROPES + 4 RATCHETS + 4 STAKES)

ITEM #	Qty 1	2-5	6-11	12-24
230201	\$92	\$90	\$88	\$86 (C)



**ELECTRIC PUMP**  
The fastest solution for inflating your inflatable equipment.



**HAND PUMP**  
Manually inflate your Airdome without the need of electricity.



**30 lbs RUBBER WEIGHT**  
The perfect solution for securing your tents, flags or umbrellas on asphalt or on any flat surface.



**PRO STAKES**  
These 4 professional 18" x 1/2" stakes are designed to hold your tent in place in case of heavy winds.



**EASY RATCHET**  
This professional 3/8" ratchet and 10" rope can hold up to 250 lbs. It comes with an automatic lock and release system to keep or release the tension easily.



**HEAVY WINDS STAKE KIT**  
This heavy wind stake kit includes 4 professional stakes, 4 ropes and 4 ratchets.



## AIR TENT

**A. Ultra Strong DACRON FRAME**

**B. POLYURETHANE BLADDER** that is puncture resistant

**C. AIRTIGHT INNER TUBE TECHNOLOGY** to keep air sealed inside

**D. STAINLESS STEEL BALLAST CONNECTIONS**  
Reinforced anchoring system for securing your tent on different terrains.

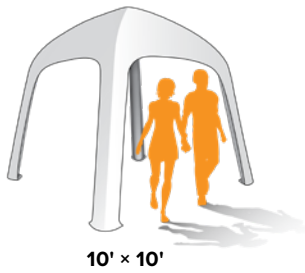
**E. OVER PRESSURE VALVES**  
The valve system will automatically release excess air when the optimum pressure is reached.

**F. CUSTOM FRAME OPTIONS**  
select from 5 different colors to give your Air Tent a unique presentation.

**G. FAST AIRFLOW ONE-WAY VALVE**  
Fast Inflating valve system with unidirectional air flow for fast set up.

**H. FREE Electric Pump, Carrying Bag, and Stakes**

### SIZES OPTIONS



### WALL OPTIONS



### PRODUCT SPECIFICATIONS

OUTER DIMENSIONS 120"W x 120"D x 108"H  
 INSIDE DIMENSIONS 104"W x 104"D x 101"H  
 FRAME WEIGHT 15 lbs.  
 WALL WEIGHT 11 lbs.



### 10' x 10' FRAME + 600 DENIER POLYESTER TOP (WITH TRANSPORT BAG & STAKES)

ITEM #	SIZE	Qty 1	2-5	6-11	12-24
100100	10' x 10' Frame + Printed Top	\$1,858	\$1,821	\$1,784	\$1,747

### SINGLE-SIDED 10' WALL (600 DENIER POLYESTER)

ITEM #	SIZE	Qty 1	2-5	6-11	12-24
100094	10' Wall Printed	\$358	\$351	\$344	\$337
100099	10' Wall with Door Printed	\$388	\$380	\$372	\$365
100097	10' Wall with Window Printed	\$388	\$380	\$372	\$365



**A. Ultra Strong & Durable DACRON FRAME**

**B. POLYURETHANE BLADDER** that is puncture resistant

**C. AIRTIGHT INNER TUBE TECHNOLOGY** to keep air sealed inside

**D. FAST AIRFLOW ONE-WAY VALVE**  
Fast Inflating valve system with unidirectional air flow for fast set up.

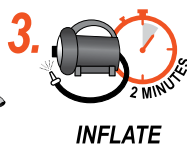
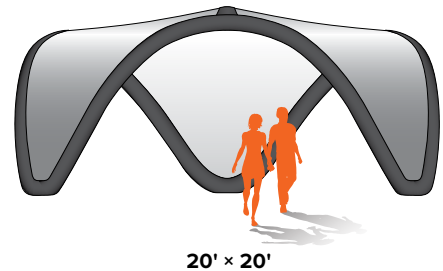
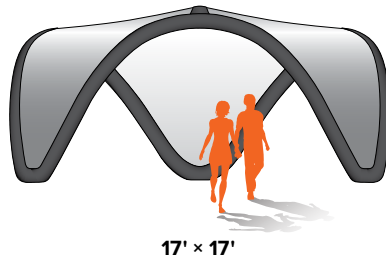
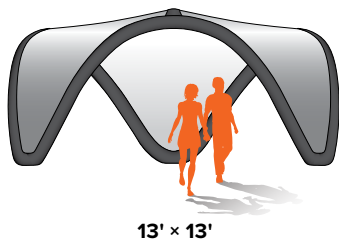
**E. CUSTOM FRAME OPTIONS**  
select from 5 different colors to give your AirWave a unique presentation.

**F. OVER PRESSURE VALVES**  
The valve system will automatically release excess air when the optimum pressure is reached.

**G. FREE Electric Pump, Carrying Bag, and Stakes**

INFLATABLES

**SIZES OPTIONS**



**PRODUCT SPECIFICATIONS**

SIZE	OUTSIDE DIMENSIONS	INSIDE DIMENSIONS	WEIGHT
13'x13'	167"W x 167"L x 105"H	152"W x 152"L x 97"H	62 lbs.
17'x17'	207"W x 207"L x 122"H	188"W x 188"L x 113"H	71 lbs.
20'x20'	244"W x 244"L x 130"H	224"W x 224"L x 120"H	95 lbs.



**TENT FRAME + 600 DENIER POLYESTER TOP (WITH TRANSPORT BAG & STAKES)**

ITEM #	SIZE	Qty 1	2-5	6-11	12-24
110038	13' x 13' Frame + Printed Top	\$4,897	\$4,799	\$4,701	\$4,603
110040	17' x 17' Frame + Printed Top	\$6,122	\$6,000	\$5,877	\$5,755
110042	20' x 20' Frame + Printed Top	\$7,780	\$7,624	\$7,469	\$7,313